

Netzer Connections

Connection data

First you have to localize the Netzer within the network. You need to know either the IP address or the MDNS name. More you can find in the article [start](#).

Furthermore we distinguish between different connection ports:

Destination point	Standard port
Web pages	80
GPIO server , only project IO_base	65000
Net socket (serial server) , only projects IO and SPISlave	64000

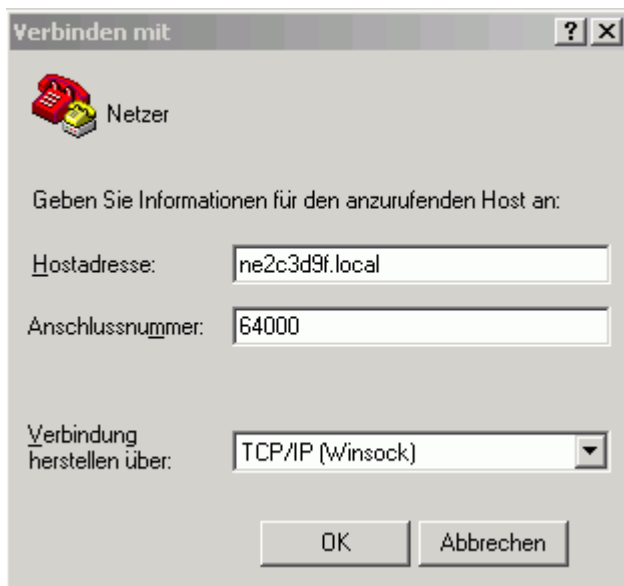
All standard ports can be changed at will.

Connecting with terminal program

Often only a serial connection should be tested or some GPIOs must be read. For that reason it is recommended to use a terminal software to connect to one of the Netzer destination points.

Windows

In WindowsXP there was the program HyperTerminal which could establish raw TCP/IP connections.



An HyperTerminal alternative is **PUTTY**. Further variants you can find [here](#).

While using **com0com** and the included **com2tcp** you may use any terminal program. You do not have to use telnet or TCP/IP sockets. That is also more important if you have to transmit or receive

binary data.

com2com establishes a pair of virtual COM ports, which are connected internally. They are called CNCA0 and CNCB0 for example. Now you can connect your chosen terminal program with CNCA0. Sent characters are visible at CNCB0, characters sent on CNCB0 are received within the terminal program.

With com2tcp you can connect CNCB0 via TCP/IP to Netzer.

This [manual](#) describes important details for installation and usage.

Opening a connection with com2tcp

1. Open command line (Start menu, run, type 'cmd')
2. Type:

```
com2tcp --ignore-dsr \\.\CNCA0 ne2c3d9f.local 64000
```

Adjust for your Netzers name and port accordingly. Instead of the name you also can type the IP address.

From:

<http://mobacon.de/dokuwiki/> - **MoBaCon**

Permanent link:

<http://mobacon.de/dokuwiki/doku.php?id=en:netzer:connection>

Last update: **2025/06/11 20:42**

