

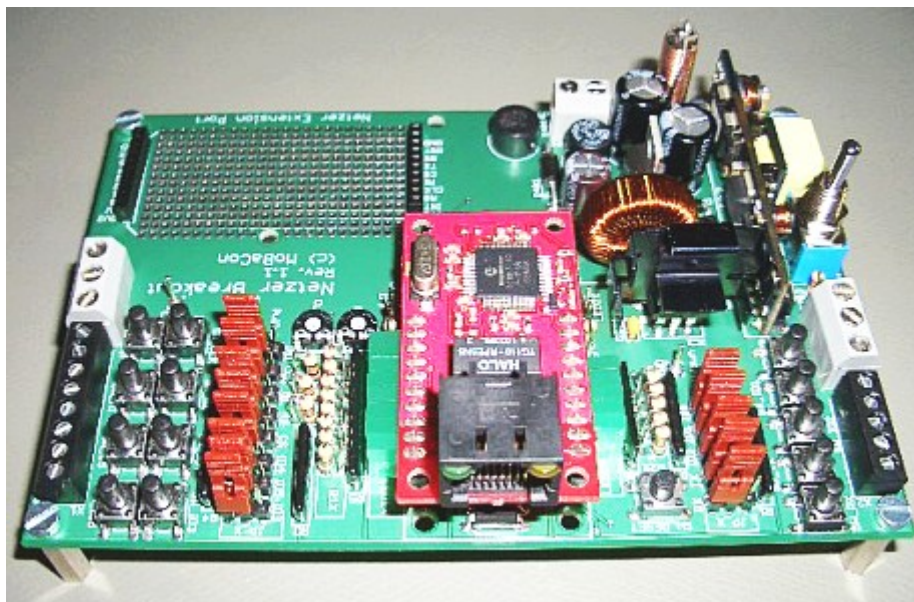
Hardware details

Netzer Playground extension boards

For the Netzer Playground some extension boards were developed:

- [S88-Extension](#)
- [I2C-Extension](#)

Netzer Playground



The [Netzer Playground](#) enables quick development of circuits around the ethernet gateway Netzer from MoBaCon. Netzer is simply put into the prepared socket.

Netzer Eagle Libraries

For new Eagle projects Netzer in a library that is easy to use (Release of 2012-05-22):

[Open](#) (Eagle version 5.X)

Also included are footprints and schematic device for the extension port to develop own extension boards for the breakout.

Schematics

- Eagle file: [Open](#)

- PDF: [Open](#)

Layout

- Eagle file: [Open](#)
- PDF (Top layer): [Open](#)
- PDF (Bottom layer, mirrored): [Open](#)
- PDF (Parts, top layer): [Open](#)

From:

<http://mobacon.de/dokuwiki/> - **MoBaCon**

Permanent link:

<http://mobacon.de/dokuwiki/doku.php?id=en:netzer:hardware&rev=1337719266>

Last update: **2025/06/11 20:42**

