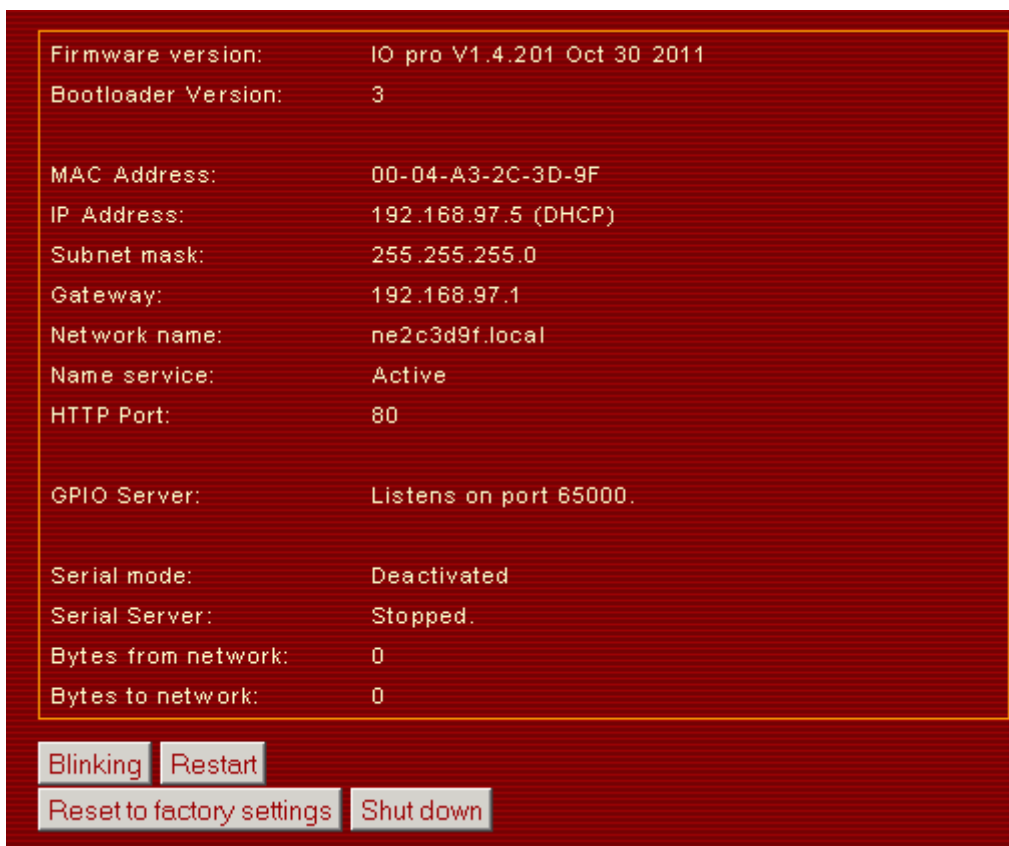


# Startpage Webinterface



## Buttons

### Blink

If there is more than one Netzer in the network, it could be useful to find a single Netzer with the Blink mode. Both LEDs at the RJ45 socket are toggled in a second interval.

### Restart

The Netzer is shut down and restarted afterwards. The bootloader is not activated during this time.

### Reset to factory settings

The Netzer is shut down and restarted afterwards. The bootloader is not activated during this time. Right after the restart all settings are reset to [factory settings](#).

### Shut down

The Netzer is shutdown and enters power down resp. sleep mode. Also in this mode Netzer consumes power, but not as much like in normal mode. An impulse at the reset pin wakes Netzer up.

From:  
<http://mobacon.de/dokuwiki/> - **MoBaCon**

Permanent link:  
<http://mobacon.de/dokuwiki/doku.php?id=en:netzer:startpage&rev=1324293814>

Last update: **2025/06/11 20:42**

